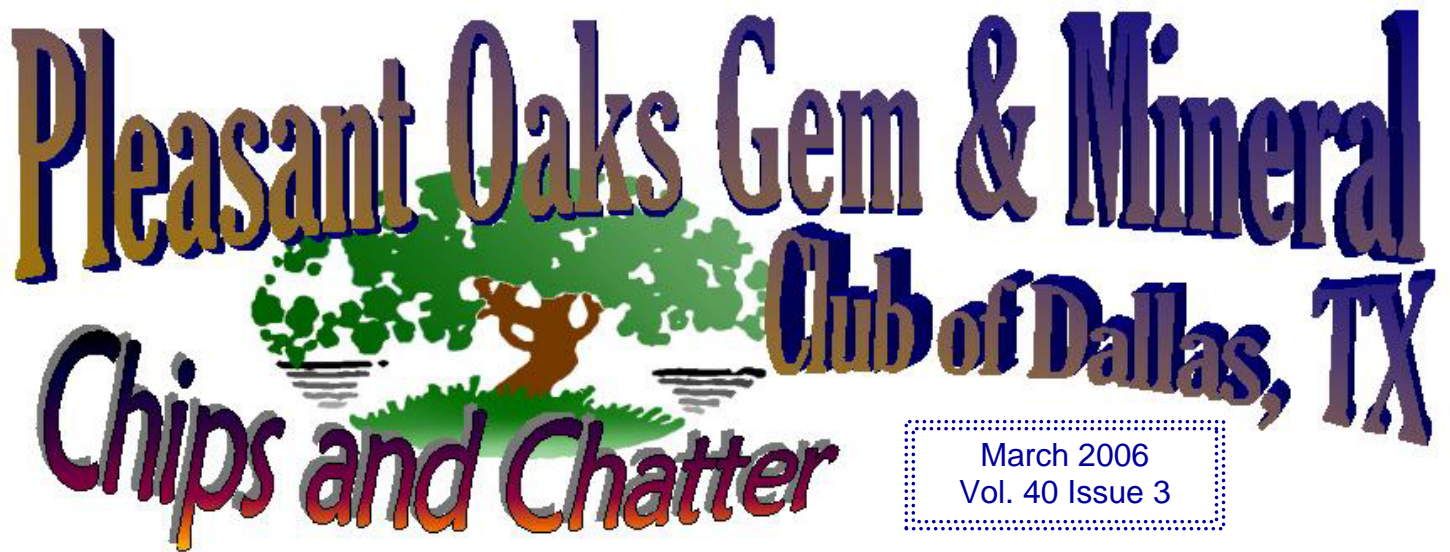


Pleasant Oaks Gem & Mineral Club of Dallas, TX

Chips and Chatter



March 2006
Vol. 40 Issue 3

Features

Field Trips - Alpine, Jasper, Colorado	3
Geologic Time.....	4
Question of the Month - Diadem.....	5
Science Fair.....	3
Rock Swap.....	3
Shop Tip	4
2006 Honorary Scholarship Award Winner.....	6
Dr. Barbara L Dutrow, Ph. D. Bio Sketch.....	6

Monthly Columns

Editor's Corner - Club in Crisis, Again>>	4
Federation Page	6
Metroplex Clubs.....	5
Minutes	2
President's Notes.....	2
Shop Calendar.....	7
Shop Report from 2 nd Vice President.....	2
Show and Tell Table	2
Shows.....	4

Workshop, Meeting, etc.

- Check out our web site for a color version of the Chips and Chatter
- Open Shop on Monday evening and Saturday morning
- Beaded Flowers Classes 15, 22 Feb, 1 Mar
- Silversmithing Classes 28 Feb. & 7 Mar.
- Metal Etching Class - in work
- IGEM March 10 -12. Set Up on 8 March
- Jasper TX Field Trip 18 March, see page 3
- **Rock Swap at Shop, 1 April, see page 3**
- Alpine Field Trip 8 - 15 April, see page 3
- **Membership Renewal - see page 8**

Purpose

The Pleasant Oaks Gem and Mineral Club of Dallas is organized for charitable and educational purposes to promote interest in the various earth sciences, in particular those hobbies dealing with the art of cutting and polishing gemstones, the science of gems, minerals and metal crafts, as well as their related fields.

Monthly Meeting

Monthly Meeting: March 2nd at 7:30 PM
Garland Women's Activities Building
713 Austin, Garland, TX

Show & Tell

Slabs
See page 2

Club Officers for 2006

President: Beth Hollingsworth, 972-226-1543
 1st VP: Charles Black, 940-381-6913
 2nd VP: Brenda Dowell, 972-771-9502
 Treasurers: Delbert Grady, 972-235-6575
 Secretary:
 Editor: Don Shurtz 972-509-2821
 E-mail: don.shurtz@gmail.com
 4004 Dublin Road
 Parker, TX 75002-6526

Copyright 2006 by D.C. Shurtz. Unless otherwise noted, permission granted for non-commercial reproduction of articles provided they remain essentially intact and credit is given to the author and original source. Where noted, the author retains the copyright and must be contacted for permission to reproduce the article. All articles may also be used as reference provided citation is given.

Pleasant Oaks Gem & Mineral Club Minutes

February 2, 2005, 7:30 PM Location: Women's Activities Building, 713 Austin St., Garland, TX

No minutes received to publish

President's Note

Beth Hollingsworth, Pleasant Oaks G&MC

- Silversmithing class on 21 and 28 Feb (Ed. note - changed to 28 Feb and 7 Mar to avoid conflict with Dallas G&MS club meeting)
- Beaded Flowers class, 3 sessions on Feb 15 and 22 and 1 March
- Working on class about Etching Metal - details to be announced shortly
- Warner Ragan is coordinating our club's efforts at IGEM, see the note on page 3.
- We just got a note that Warner Ragan will be teaching a Wire Wrapping class at Eastfield Community College. Eastfield College is part of the Dallas Community College System and is located at 3737 Motley Drive, Mesquite. The 8 week class starts on Saturday, March 4 and continues to May 6. Class times are 10:00 am to 1:00 pm each Saturday in the Science build. The class will cost \$80.00 plus tools and materials. You will need to call Eastfield at 972-860-7102 and let them know you want to register for "Wired Wrapped Jewelry - HRGY 1091 \$80.00". Although this is not a shop or club activity, perhaps if any club members attend they can get a few of their fellow students to join us.

2nd VP's Shop Report

Brenda Dowell, Pleasant Oaks G&MC

1. After our last meeting we have repaired 2 of the large saws. Mike Russell ordered the parts and helped teach me how to work on the saws
2. It has been suggested by Mike Russell, current Shop Lead and member of Dallas G&MS, that some excess items be put up for auction at the Rock Swap on 1 April. Some of the items include a 2-head sphere maker, a kiln, and a Highland combination saw/grinder. Other items may be identified. These items are currently at the shop taking up valuable space and not being utilized. Proceeds, if auction is authorized, would support shop activities and/or possible new equipment purchases
3. The shop currently runs in the red, but it doesn't have to be that way. We are currently getting better participation at the shop to the extent that we have people waiting on equipment, so we are trying to see if we can find another day each week to open - perhaps we need to take a pole on what additional times would work. If we do open an additional day, we may need more shop supervisors. We are also working to increase the number of classes - they benefit not only the students but they help defer shop expenses.

Show and Tell Table

Wanda Fitzgerald, Pleasant Oaks G&MC

On March 2nd let's fill our Show and Tell Display table with slabs. We all have slabs cut from all different mineral, gems, rocks, crystals, etc. I know some of us have beautiful and even rare slabs. Let's fill the table up. See you on Thursday!

Wanda

Field Trips

ALPINE, TX: Brad Tanas is organizing another trip to the Alpine area for week of 8 to 15 April. The trip will include the Marfa (old Alpine) Gem and Mineral club show. A tentative schedule for the field trip is:

8th leave Dallas

9-12th Walker Ranch (fee dig)

13th at petrified wood location? 1 day trip - several options (fee dig)

14th at Marfa Show and a local show field trip

15th 1/2 day at Marfa Show and/or field trip (play it by ear), drive home

16th relax and clean up on Sunday 16th (Easter Sunday)

For more details on the trip, contact Brad at a club meeting

JASPER, TX: The Dallas G&MS is hosting a field trip to Jasper, TX on Saturday, 18 March. Expect to find lots of petrified wood, possibly even some palm wood. The plan is to meet at the McDonald's in Jasper between 9:15 and 9:30. The McDonalds is located near the intersection of TX 63 - US 190 and US 96 - an intersection with one of the few stoplights in town. The collection area is about 100 yards from the parking area and is in a shade covered creek with a sandy bottom. Bring boots or tennis shoes that you don't mind getting wet. Bring a shovel to dig for palm wood. Expect to stop collecting around 12 or 1 pm because you will be exhausted from carrying large pieces of petrified wood back to your car. The Dallas paleo society will possibly continue the field trip on Monday at Toledo Bend reservoir.

COLORADO: Under discussion is an extended field trip this summer to Colorado. Early plans are to go in late July and return in early August. Mineral collecting is expected to be excellent. More details when available.

Dallas Regional Science and Engineering Fair

The Dallas Regional Science and Engineering Fair will be Saturday and Sunday, March 25 and 26. Judging will be Saturday morning. The fee for the student Awards Banquet has been sent in and the rock tumbler kit has been purchased. We have some judge volunteers, but the more the merrier. If you can afford a Saturday morning, it will be well worth your time. It is amazing to see what the middle school and high school students are doing. If you would like to be judge, please contact me, Don Shurtz, at the next meeting or send me an email at don.shurtz@gmail.com. I can promise you that it will be a highly rewarding experience.

International Gem and Jewelry Show (I GEM)

The International Gem and Jewelry Show will be held at Market Hall on Friday, Saturday, and Sunday March 10 - 12. If the club wants a booth at the show (value approximately \$1500), we need to help with the show set up on Wednesday, 8 March. If you want to sell from the club booth, YOU MUST help with the set up. Warner Ragan is our point of contact for the IGEM show. See him at the next meeting if you want to participate. Basically we need to help put the bunting around the tables. Tickets to the show will also be available at the next club meeting. Each ticket allows 2 people to attend the show. The tickets are for members of the club and their guests. Here is yet another way we can possibly get people interested in our club and hobby

Rock Swap at the Shop

There will be a Rock Swap at the Joint Shop parking lot on 1 April 2006 (NOT A APRIL FOOLS JOKE). Sell from your car trunk, card table, or truck bed. Bring your rocks, minerals, finished products to sell, trade, or just for the fun of it. Everyone

is welcome to participate as a seller, buyer, or just to talk and socialize. Shop tours will be available, and food will be available for a donation.





Editor's Corner - Club in Crisis, Again??

Don Shurtz, Pleasant Oaks Gem and Mineral Club

In 1999 I wrote an editorial entitled "Club In Crisis". That editorial was written at a time when the leadership of the club was seriously considering disbanding the club. DEAD! The major issue at the time was getting a full slate of officers. For most of 1999 we did not have a club secretary and it did not appear that we could field a slate of officers for the year 2000. WE WERE A CLUB IN CRISIS, AND WE MAY BE HEADED DOWN THE SAME PATH AGAIN! We have the club officers in place except for the secretary, but there is a lot more that could be done - and the 20 or so members who seem to pull the club along shouldn't be doing it all. In 1999 my editorial basically begged people to show their support by stepping up and being a volunteer. Now, in 2006, it boils down to the same issues - we all need to start pulling together - ALL OF US. Beth can't run this club by herself. She needs YOU to step up. We need a Secretary (actually, according to the By-Laws we are supposed to have a Recording Secretary and a Corresponding Secretary but it has been so long that we actually filled both offices that we have forgotten it!). POGMC needs YOU to support the show now by taking on the responsibilities as a show coordinator for advertising, tickets, hospitality, kids mine, display cases, set up, tear down, etc. and to assist the Show and Dealer Chair persons. Brenda needs YOU to help at the shop in the form of shop supervisors, class instructors, class students, and just plain-old shop users. Charles needs YOU to help in doing a program, finding someone who can present a program, or just help him with activities for the club meetings. I need YOU to help in the form of an assistant editor, articles, jokes, or just about anything that can be shared through the printed media. We need volunteers to figure out how we can let the rest of the DFW Metroplex know that we exist - that we have a great hobby. WE NEED YOU - ALL OF YOU! NOW!

Upcoming Shows

Mar 3-5	Hachita, NM	Hachita Community Center, 505-436-2751
Mar 4-5	Big Spring, TX	Big Spring Prospectors Club, Howard County Fair Barn, 432-263-4552
Mar 4-5	Corpus Christi, TX	Gulf Coast G&MS, Al Amin Shrine Center, 361-851-8788
Mar 4-5	Farmers Branch, TX	Mineral. Association of Dallas (MAD), Brookhaven College, 972-437-9980
Mar 9-12	Deming, NM	Deming G&MS, Southwestern NM Fairgrounds, 505-544-8231
Mar 10-12	Dallas, TX	IGEM Dallas, Dallas Market Center, 301-294-1640
Mar 11	San Antonio, TX	Rings & Things, Live Oak Civic Center, 800-366-2156
Mar 12	Austin, TX	Rings & Things, Red Lion Hotel, 800-366-2156
Mar 14	Dallas, TX	Rings & Things, Wyndham Garden Hotel, 300-366-2156
Mar 17-19	San Antonio, TX	IGEM San Antonio, Henry B. Gonzalez Conv. Center, 301-294-1640
Mar 17-19	Albuquerque, NM	Albuquerque G^MC, NM State Fairgrounds, 505-255-5478
Mar 18-19	Fort Worth, TX	Bead Market, Amon Carter Exhibit Hall, rebekah@thebeadmarket.net
Mar 24-26	San Antonio, TX	Southwest G&MS, Morris Activity Center, Freeman Coliseum, 210-337-8908
Apr 8-9	Abilene, TX	Central Texas G&MS, Abilene Civic Center, 325-692-4642
Apr 14-16	Marfa, TX	Big Bend G&MS, American Vets Bldg, 432-729-4526
Apr 28-30	Austin, TX	IGEM Austin, Palmer Events Center, 301-294-1640
Apr 29-30	Lubbock, TX	Lubbock G&MS, Lubbock Civic Center, 806-894-1584

Shop Tip

Trim sawing - Trim saw blades can be worn or damaged by force feeding of slabs. An indication of too much pressure is a little dry area on the surface of slab just in front of the blade. Sparks may also indicate too much pressure. An easy way to align the blade to the marked slab is to have the spray of coolant hit just outside the line

From Breccia 01/06 via Jax Gems 11/05 via Dops and Digs 3/05 via Rockpile 12/01

Geologic Time

Camels Often Sit Down Carefully. Perhaps Their Joints Creak. Early Oiling Might Prevent Permanent Rheumatism.

If you can remember this interesting scenario, then you can remember the geologic time periods from the oldest to youngest; **Cambrian, Ordovician, Silurian, Devonian, Carboniferous, Permian, Triassic, Jurassic, Cretaceous, Eocene, Oligocene, Miocene, Pliocene, Pleistocene, Recent.**
From The Hound's Howl 03/06 via Rock Buster News 04/02 via Breccia 2/99

Question of the Month - Daidem

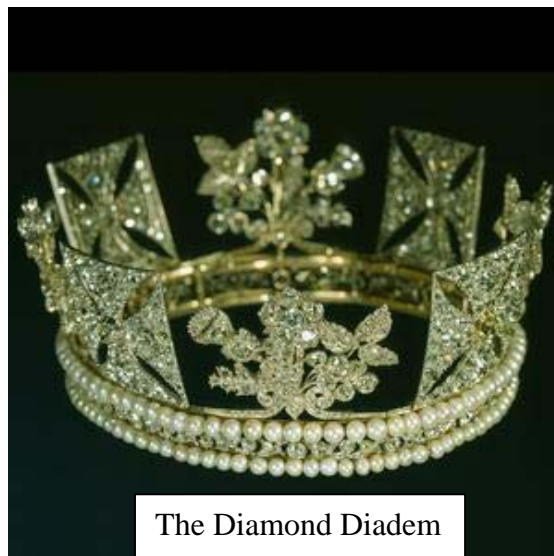
Don Shurtz, Pleasant Oaks Gem and Mineral Club of Dallas

From the December issue: What is a DIADEM

According to Webster's New Collegiate Dictionary, a diadem is a crown, or more specifically, a headband worn as a badge of royalty. Although the word seems to be related to "diamond", a look at the genesis of the word shows they are not related.

Diadem comes from the Middle English "diademe" which comes from Old French "diadema" which in turn comes from the Greek word "diadein" which means to bind around. The word can be traced back to the Sanskrit word "daman" which means rope. Diamond's etymology is entirely different, coming from the Middle English "diamounde" which comes from the Middle French "diamant" which in turn comes from the Late Latin "diamant" or from Latin "adamant" meaning hardest metal. However, a diadem may be encrusted with diamonds.

The modern crown or tiara worn by royalty originated in the Middle East where ribbon tied around the head with a specific knot was used to show a person's status. Only a king could tie his diadem or turban in a manner that it stood erect. For the Greeks, the ribbon became a wreath or garland. In the 4th century BC Greek rulers often wore a golden wreath, especially at religious ceremonies. From then on, a golden diadem became a symbol for a king or ruler. It took until the 4th century AD before the diadem was adorned with diamonds and pearls, but since then most diadems have been made with gems.



The Diamond Diadem



Depending upon which version or translation is utilized, the term diadem is found in several locations in the Bible. The International Standard Bible Encyclopedia lists 7 references to diadem, those being Job 29:14, Isaiah 62:3, Isaiah 28:5, Ezekiel 21:26, and Revelations 12:13, 13:1, and 19:11-12. However, some Bible translations use the terms turban, tiara, mitre, and crown.

When we think of a crown, we often think of a ring with triangles or spires radiating upward. These upward radiating points date back to antiquity when they represented the rays of the sun. The picture at the left shows a diadem with points as depicted on a Roman coin from the 3rd century BC.

1. Webster's New Collegiate Dictionary, H. Woolf editor, copyright 1979, G. & C. Merriam Co., Springfield, MA
2. Livius - Diadem, <http://www.livius.org/di-dn/diadem/diadem.html>
3. Wikipedia - Diadem, <http://en.wikipedia.org/wiki/Diadem>
4. The Royal Collection, The Diamond Diadem, <http://www.royalcollection.org.uk/eGallery/object.asp?object=31702>
5. Bible Tools, <http://bibletools.org//index.cfm/fuseaction/Def.show/RTD/ISBE/ID/2676>

Question - of - the - Month for April: What is OBSIDIAN

Metroplex Gem and Mineral and Related Clubs

Texas School of Earth Science (Arlington G&M Club) meets the 1st Tuesday of each month at 7:30 PM at 1408 Gibbins, Arlington

Pleasant Oaks G&M Club meets the 1st Thursday of each month at 7:30 PM at Garland Women's Bldg., 713 Austin, Garland.

Lockheed-Martin Stone Steppers, 2nd Tuesday at 7:30 PM, 3400 Bryant-Irving Road, Fort Worth, TX

Dallas Paleontological Society meets the 2nd Wednesday of each month at 7:30 at Dallas Museum of Natural History, Fair Park.

Dallas G&M Society meets the 3rd Tuesday of each month at 7:00 PM at Ridgewood Rec. Cntr, 6818 Fisher Rd, Dallas.

Dallas Bead Society meets the 3rd Thur. of each month at 7:30 at Walnut Hill Rec. Center, NW corner Walnut Hill & Midway, Dallas

Oak Cliff G&MS meets the 4th Tuesday of each month at 7:30 PM, Ice House Arts Plaza, 1011 Brooklyn, Dallas

Fort Worth G&M Club meets the 4th Tuesday of each month at 7:30 PM at 3545 Bryan Avenue, Fort Worth, TX.



2006 Honorary Scholarship Award Winner

by Charles R. Schueler, SCFMS Executive Vice President
From the Jan-Feb 2006 SCFMS Newsletter

The SCFMS Scholarship Committee has selected Dr. Barbara Lee Dutrow as the 2006 American Federation of Mineral Societies Scholarship Foundation Honorary Winner.

Dr. Dutrow will have the privilege of selecting two graduate students, who will each receive a \$2000. a year grant for 2 years. Each year the foundation provides two \$2000 scholarships to each of the six Regional participating Federations.

Dr. Dutrow presently teaches at Louisiana State University. She has an impressive list of publications and awards to her credit.

It is a real honor to have her as the Honorary Scholarship Award winner for the South Central Federation of Mineral Societies for 2006.

Charles R. Schuler

Barbara L. Dutrow Ph. D. Biographical Sketch

From the Jan-Feb 2006 SCFMS Newsletter

Dr. Dutrow received her B.S. degree from Chardon State College in Nebraska and her M.S. and Ph.D. degrees from Southern Methodist University in Dallas, TX. Her masters degree focused on determining the morphological variations of a Pleistocene mammoth population. For her Ph.D., she switched fields to another area of geology to focus on metamorphic petrology and mineralogy (her first love). After receiving her Ph.D., she was awarded an Alexander von Humboldt fellowship (by the German government) to work on high pressure and temperature experiments of mineral stability at Ruhr University in Bochum, then West Germany. This was followed by a post doctoral

appointment at the University of Arizona studying the effects of fluids on rocks and a faculty position at the University of Iowa in mineralogy/petrology. Dr. Dutrow arrived at Louisiana State University (LSU) in 1992.

Dr. Dutrow's research interests focus on unraveling the history of mountain belts through the use of metamorphic minerals. Her work combines field and analytical studies of metamorphic minerals. By using crystal chemistry, pressure, temperature and fluid, compositions of rock formation can be determined. Additional information is deciphered by matching the rocks texture with computer models of mineral growth. Most recently, her work has expanded to incorporate computational modeling of regions.



She is also interested in mineralogy and its application to the environment. She developed a course on "Earth Materials and the Environment" as a method to show students how mineralogists and geologist are integral, and necessary, to public policy issues. Through this course, students learn some minerals are problems for the environment but others provide environmental solutions. Knowing mineralogy helps make better laws and better citizens.

Through her expertise, Dr. Dutrow has served on three National Academy of Science boards: a two year study on how to better manage a high-level waste repository; and an ad hoc committee on Earth Sciences and Public Health, and as a member of the National Research Council's Board on Earth Sciences and Resources.

Dr. Dutrow has taught mineralogy at LSU since 1992. She recently developed new watching tools for improving student outcomes while maintaining course rigor and content. Her technique was recently published in the J. Geological Education to special issue on Teaching Mineralogy in the 21st Century.

Joint Workshop Calendar




March 2006

SUNDAY	MONDAY	TUESDAY	WEDNESDAY	THURSDAY	FRIDAY	SATURDAY
				1 PLEASANT OAKS Gem & Mineral Club Meeting 7:30 PM		2 3 4 Open Shop 9AM - 2PM 1st Sat. Trading Day
5	6 Open Shop 6-9 PM	7 Silversmithing Class at Shop	8 Ash Wednesday IGEM Set Up	9	10 IGEM	11 Open Shop 9AM - 2PM IGEM
12 IGEM	13 Open Shop 6-9 PM	14	15	16	17  St Patricks Day	18 Open Shop 9AM - 2PM Field Trip to Jasper, TX
19  First day of Spring	20 Open Shop 6-9 PM	21 Dallas Gem & Mineral Society Meeting 7:00 PM	22	23	24	25 Open Shop 9AM - 2PM Science Fair Judging
26	27 Open Shop 6-9 PM	28	29	30	31	Coming up Alpine Field Trip April 8 - 15

Shop Phone Number: 214-349-2022. For Confirmation of Dates & Times contact Brenda Dowell at 972-771-9502

Joint Workshop Calendar

April 2006

SUNDAY	MONDAY	TUESDAY	WEDNESDAY	THURSDAY	FRIDAY	SATURDAY
						1 Open Shop 9AM - 2PM  ROCK SWAP All Fools Day
2 Daylight Saving's Time Begins	3 Open Shop 6-9 PM	4	5	6 PLEASANT OAKS Gem & Mineral Club Meeting 7:30 PM	7	8 Open Shop 9AM - 2PM Field Trip to Alpine, TX
9 Field Trip to Alpine, TX	10 Open Shop 6-9 PM Field Trip to Alpine, TX	11 Field Trip to Alpine, TX	12 Field Trip to Alpine, TX Passover Begins	13 Field Trip to Alpine, TX	14 Field Trip to Alpine, TX Good Friday	15 Open Shop 9AM - 2PM Field Trip to Alpine, TX
16  Easter Sunday	17 Open Shop 6-9 PM	18 Dallas Gem & Mineral Society Meeting 7:00 PM	19	20	21	22 Open Shop 9AM - 2PM Earth Day
23	24 Open Shop 6-9 PM	25	26	27	28  Arbor Day	29 Open Shop 9AM - 2PM
30						

Shop Phone Number: 214-349-2022. For Confirmation of Dates & Times contact Brenda Dowell at 972-771-9502

CHIPS AND CHATTER
Pleasant Oaks Gem & Mineral Club
 P.O. Box 831934
 Richardson, TX 75083-1934



FIRST CLASS MAIL

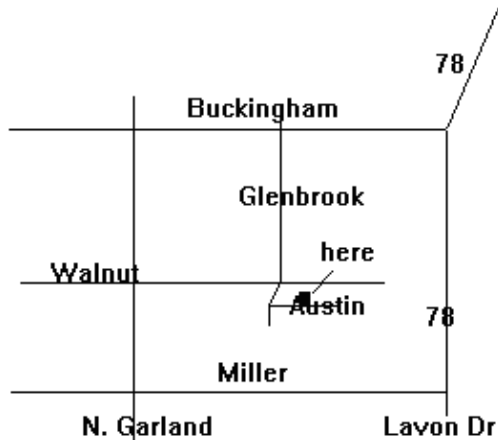
To:

3rd place SCMS 2005 small bulletins
 3rd place, AFMS 2005 small bulletins
 1st place SCFMS 2004 small bulletins
 HM AFMS 2004 small bulletins
 2nd place SCFMS 2003 small bulletins
 9th place AFMS 2002 small bulletins
 2nd place SCFMS 2002 small bulletins

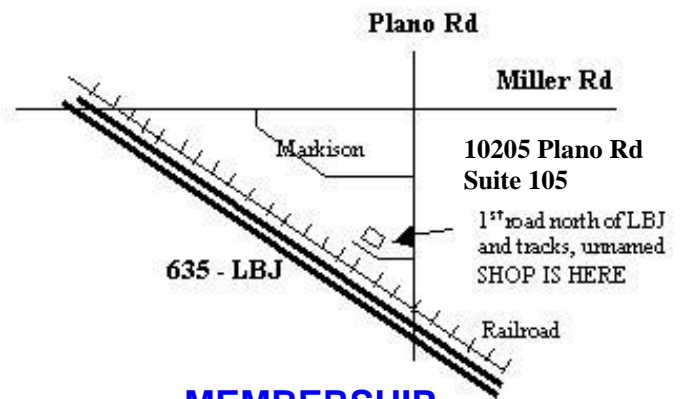
Membership renewal is past due. If there is an envelope and club application enclosed in your Chips and Chatter, then the club records indicate that you have not renewed your 2006 membership. Renew now or lose you membership privileges. Return you application by mail or see the treasurer at the March meeting

PLEASANT OAKS GEM and MINERAL CLUB OF DALLAS

Meeting Map



Joint Club Shop Map



MEETINGS

First Thursday of each month, 7:30 PM
 Garland Women's Activities Build
 713 Austin, Garland, TX
 (Northeast corner of Austin & Glenbrook)

MEMBERSHIP

Single Adult: \$16.50, Junior: \$5.00
 Family: \$27.50
 (plus badge fee for new members)

Member of

South Central Federation of Mineral Societies

Affiliated with

American Federation of Mineral Societies