

# Pleasant Oaks Gem & Mineral Club of Dallas, TX

## Chips and Chatter



October 2006  
Vol. 40 Issue 10

### Features

"Candle" Your Agate .....	4
Cutting Small Agates .....	4
Llano Field Trip .....	4
More Auctions .....	4
More Rock Sales .....	3
Note from Dale Miller – Sale .....	3
Question of the Month – Geode.....	5
Truth & Some Consequences.....	6

### Monthly Columns

Editor's Corner .....	2
Federation Page .....	6
Metroplex Clubs.....	5
Minutes .....	2
Question of the Month .....	5
Shop Calendar.....	7
Shop Report.....	2
Shows .....	2

### Workshop, Meeting, etc.

- Check out our web site for a color version of the Chips and Chatter
- Open Shop on Monday evening and Saturday morning
- Ladies night at the shop every other Thursday

Copyright 2006 by D.C. Shurtz. Unless otherwise noted, permission granted for non-commercial reproduction of articles provided they remain essentially intact and credit is given to the author and original source. Where noted, the author retains the copyright and must be contacted for permission to reproduce the article. All articles may also be used as reference provided citation is given.

### Purpose

The Pleasant Oaks Gem and Mineral Club of Dallas is organized for charitable and educational purposes to promote interest in the various earth sciences, in particular those hobbies dealing with the art of cutting and polishing gemstones, the science of gems, minerals and metal crafts, as well as their related fields.

### Monthly Meeting

**Monthly Meeting: October 5th at 7:30 PM**  
**Garland Women's Activities Building**  
**713 Austin, Garland, TX**

### Presentation

**Mark Carter**

### Show & Tell

#### **Something from the Show**

#### Club Officers for 2006

President: Beth Hollingsworth, 972-226-1543  
 1st VP: Charles Black, 940-381-6913  
 2nd VP: Brenda Dowell, 972-771-9502  
 Treasurers: Delbert Grady, 972-235-6575  
 Secretary: Renee Wofford  
 Editor: Don Shurtz 972-509-2821  
 E-mail: don.shurtz@gmail.com  
 4004 Dublin Road  
 Parker, TX 75002-6526

# Pleasant Oaks Gem & Mineral Club Minutes

## Minutes – July, 2006 General Meeting

No minutes received to publish

### Upcoming Shows

<b>Sep 30-1 Oct</b>	<b>Farmers Branch, TX</b>	<b>Pleasant Oaks G&amp;MC EMGI Building, Brookhaven College, 972-509-2821</b>
Oct 7-8	Amarillo, TX	Golden Spread G&MS, Amarillo Civic Center,
Oct 7-8	Jacksonville, AR	Central Arkansas GM&GS, Jacksonville Comm. Cntr, 501-821-2346
Oct 12-15	Mount Ida, AR	World Championship Crystal Dig, 870-867-2723
Oct 12-15	Oklahoma City, OK	OK International Gem Show, Box Business Conv. Cntr, 405-213-0407
Oct 13-15	Tahlequah, OK	Tahlequah R&MS, Tahlequah Community Bldg, 918-458-0801
Oct 14	Fort Davis, TX	Chihuahuan Desert Nature Center & Botanical Gardens, 432-426-2924
Oct 14-15	Sierra Vista, AR	Huachuca Gem Mineral, and Jewelry Show, Elks Lodge, 520-459-5221
Oct 14-15	Temple, TX	Tri-City G&MS, Mayborn Civic Center, 254-030-7-15
Oct 27-29	Glen Rose, TX	Austin & Dallas Paleo Society, Fossilmania, 210-492-9163
Oct 27-29	Live Oak, TX	Bead Renaissance Show, Live Oak Civic Center, 505-894-1293
Oct 28-29	Tulsa, OK	Tulsa R&MS, Expo Square, 918-728-8097
Nov 3-5	Tulsa, OK	Bead Renaissance Show, Expo Square Trade Center, 505-894-1293
Nov 4-5	Midland, TX	Midland G&MS, Midland Center, 432-697-7668
Nov 11-12	DeRidder, LA	DeRidder G&MS, Beauregard Parish Fair Grounds, 337-585-3693
Nov 17-19	Albuquerque, NM	Bead Renaissance Show, New Mexico State Fairgrounds, 505-894-1293
<b>Nov 18-19</b>	<b>Mesquite, TX</b>	<b>Dallas G&amp;MS, Resistol Rodeo Exhibition Hall, 972-278-4845</b>
Nov 18-19	Fort Worth, TX	Bead market, Will Rogers Center, www.thebeadmarket.net



### Editor's Corner - Show

Don Shurtz, Pleasant Oaks Gem and Mineral Club

I would like to use this editorial to expound on the need for people to help out at show. Unfortunately, it is too late for that. The show was in processes, for good or for bad, as this version of the newsletter went to press.

So maybe I can tell you the show results. Unfortunately, it is too early for that. The show is in process, for good or for bad as this version of the newsletter goes to press

Talk about being caught in the middle. Oh well. I hope to see you, or more correctly, saw you at the show.

### Shop Report

HELLO TO ALL,

THIS IS BRENDA AND IT'S TIME FOR THE MONDAY TIME REPORT. AS USUAL I SHOULD BE ABLE TO BE THERE BY 4:30 ON MONDAY THE 25TH.

THERE WILL BE NO OPEN SHOP TIME ON SATURDAY THE 30TH, DUE TO THE PLEASANT OAKS SHOW. THIS WILL ALSO BE THE CASE IN NOVEMBER FOR THE DALLAS SHOW.

AS MANY OF YOU KNOW, WE HAVE ASK FOR HELP WITH OUR SHOW. IF ANYONE ELSE IS AVAILABLE FOR ANY AMOUNT OF TIME, IT WOULD BE GREATLY WELCOMED. FEEL FREE TO CONTACT ME IF THIS IS A POSSIBILITY.

ALSO, NOTE WE ARE HAVING LADIES NIGHT THIS THURSDAY, THE 28TH. I GET OFF WORK THAT DAY AT 4:30 AND WILL DRIVE STRAIGHT OVER. SO, I HOPE TO GET THERE JUST AFTER 5:00. PLEASE COME AND JOIN IN AND HAVE A GREAT TIME. THERE WILL BE A LITTLE EXTRA ACTIVITY IN THE SHOP, AS THAT WE WILL BE MOVING STUFF OUT OF THERE, GETTING READY FOR OUR SHOW.

ANY QUESTIONS, PLEASE CONTACT ME. IF NOT, THEN HAVE A GREAT WEEK AND TAKE CARE.

BRENDA DOWELL  
[SMILEYJEEP@AOL.COM](mailto:SMILEYJEEP@AOL.COM)

## Note from Dale Miller – Sale

I received the following email from Dale Miller, VP of the Rollin' Rock Club

*“There will be a rock and equipment auction November 4, 2006 at 633 N. W, Lorna St., Burseson, TX 76028 This is the home of Terry and Irene Keck. You may remember Terry as the man who cooked the sausages each year at the parking lot sale in Arlington.*

*Viewing starts at 9 AM and the auction starts at 10 AM. The auctioneer will be Rick Litsinger, pres. of the Arlington Gem and Mineral Club.*

*This is going to all AGMC members that have given me their e-mail address as well as South Central Club editors.*

*If you are an editor please let your members know about this sale. I hope 7 weeks notice is enough to let you place this in your papers. This will be a good opportunity to obtain cutting material and equipment.*

*Dale Miller, Program chair, AGMC  
Supreme V. P. Rollin' Rock Club”*

Enclosures to Dale's email not indicate the following items are included in the sale:

Rocks: green moss agate, black plume agate, African blue lace agate, thunder eggs, teardrop Brazilian, yellow cat agate, blue forest petrified wood, banded agate, rainbow, silversheen, snowflake, mahogany obsidian, graveyard point, granite, palm wood, terretella, baby & whiteskin Brazilian, bigs jasper, tigers eye, malachite, big chunks of the following, petrified wood, Mexican lace agate, leopard skin jasper, and forest fire jasper, and variegated jasper

Equipment: 1- 18" Highland Park saw, 1-14" Highland Park saw + 5 blades, 1- 4" Highland Park Saw, 1- 12"Raytech saw + 2 blades, 1- 10" Diamond Pacific saw + 6 blades, 1- 4" & 6" combo saw, 4 different tumblers, 2-sphere machines; marble to 10" size, 5- 24" blades, 1- double arbor with wheels, 4 wheel cab mach.+ 2diamond + 2 exp. drums, 1-24" flat lap + 2 drums, 1- 12" flat lap + 4 drums, 1 Do All machine, 1 Cress electric kiln, 1-Ultra Sonic machine, 2-3 tons variety of rocks, and grit- from grind to polish,

## More Rock Sales

I received the following announcement by email (from Dale Miller) and by snail-mail:

Petrified Wood, Rocks Minerals and Equipment

Saturday October 14, 2006, 9:00 a.m.

Behind the Dodrill Rock Museum

123 S Cleveland, Cushing OK 74023 (across from the Post Office)

**Petrified Wood:** 75 to 100 round slabs from 4 inches to 20 inches in diameter – 1500 lbs, small wood slabs – 500 lbs, Saddle Mountain wood slabs – 500 lbs, misc. wood pieces – 1500 lbs, Blue Forest wood – 180 lbs.

**Lapidary Rocks:** Dugway geodes – 700 lbs, Apache Creek agates – 750 lbs, Dryhead – 75 lbs, Tee Pee Canyon – 100 lbs, Thunder Eggs – 60 lbs, Obsidian – 60 lbs, Coral – 30 lbs, Dolomite – 60 lbs, misc. amounts of Mexican Coconuts, banded Onyx, Mexican Lace, Brazilians, Sowbelly, Druzy Quartz, Yellow Cat, Utah Jasper, Chert, etc. – over 1000 lbs!!

**Minerals:** Selenite, Galena, Pyrite, Dubois Barite, Barite Roses, Amethyst, Vanadinite, Fluorite, Quartz Crystals, Calcite, Hemimorphite, Sulfur, Copper and Copper Minerals, Peacock and Citrine – over 1000 lbs!!

**Equipment:** Drum Sander, 12 inch Polisher, 8 inch HP Grinder, Bull Wheel, Over Arm Polisher, 24 inch Slab Saw complete and 36 inch Slab Saw complete similar to Highland Park's.

**Note:** Many of the sites where these specimens were collected are now closed. All weights and amounts are best estimates. The material is the life time collection of Zona Fast and the late Bob Fast. The auction is being organized by the Stillwater Mineral & Gem Society. It is expected to be about 500 lots.

**Terms:** Cash or check with proper ID. For tax purposes, business cards are preferred.

For additional information, contact Stillwater Mineral & Gem Society at (405)372-8635 or the Dodrill Museum at (918)225-0662.

ALL ANNOUNCEMENTS ON THE AUCTION DAY SUPERSEDE ANY PREVIOUS ADVERTIZING

## Llano Field Trip

Email from Scot Wingo, Pleasant Oaks G&M Club

October 20-22 is Llano's sesquicentennial. Included in their celebration is the Great State of Texas Gold Panning Championship and Metal Detecting and flint knapping. Since two of Llano's nicknames are Iron City and Crystal City I thought there should be some rockhounds there.

I'll be there leading some road hunting trips. Hopefully we'll be able to gain access to some private land. But if not-don't worry. June Culp Zeitner has about 50 sites in her Gem Trails books for Llano and surrounding counties. Plus the local field trip leader has told me of a boulder of massive epidote on a county road; llanite north of town, smoky quartz at Lake Buchanan, etc.

We'll meet at Robinson Park (8 AM Saturday & Sunday, Friday TBA) before driving out. If you have any questions, or there is something you'd really like to look for, please contact me. For example I'm interesting looking for some Celestine. I look forward to meeting a lot of great people, finding some nice stuff (in Mason County I found a feldspar boulder with a book of mica over a foot long), and having a fun weekend.

Scot Wingo

972 272.2419 home.

[ScotWingo@Yahoo.com](mailto:ScotWingo@Yahoo.com)

## More Auctions

I received an email from Dale Miller of the Arlington G&M Club (same Dale Miller as the previous page) advising that Arlington G&M Club meeting on Tuesday, October 3<sup>rd</sup> will include a live auction.

Dale also advises that their speaker for their November 4<sup>th</sup> meeting is Mr. Fredrick "Rick" Kupke. Mr. Kupke was one of the hostages taken when militants supporting the Ayatollah Khomeini in Iran. He spent 444 days as a hostage. Mr. Kupke is a long time employee of the National Security Agency and the US Department of State. He is currently taking silversmithing classes conducted by Arlington G&MS. Guests are welcome to attend their meeting.

### **Cutting Small Agates**

Trudy & Mel Martin, Calgary Rock & Lapidary Club  
From The Geode, Oct 2006

We have found the BEST and SAFEST way to cut small agates - and still save the QUALITY of the slice is to glue the small agate to a block of wood with ordinary Elmer's White Glue.

The block fits snugly in the vise. Depending on the size of the agate, you can cut one or two slices. Then put the block of wood into a bucket of water. Overnight, the glue softens and you can pry off the last piece.

Sometimes, we've hammered an indent into the block of wood to allow the agate piece to fit securely. You sure don't want it popping off half way through the slice.

Who wants all that gunk and goo from plaster or whatever was used to create a block, gumming up the oil in the saw when a block of wood will do the same thing with less muss, less fuss and less cleaning ?

### **"Candle" Your Agates**

Trudy & Mel Martin, Calgary Rock & Lapidary Club  
From The Geode, Oct 2006

We work almost exclusively with the AGATE we collect at the World Famous gravel pit in Souris, Manitoba.

Using the "Candle" method we are able to "see" the color and the pattern in the agate so we know which way to slice it to get the best results.

To "candle" your agates - build a small box - 4 sides and a top - NO BOTTOM. Cut a small circular hole in the center of the top. Place the box over a source of light - we use an electric trouble light. Plug in the light, place your agate over the hole and rotate it slowly - this way and that - so you can see the pattern and any fractures. Then mark (with a felt pen) the side you want to cut first.

## Question of the Month:- GEODES

The question of the month for September was “What are Geodes”. Last month’s Chips and Chatter had more content that the page limit would support, so the QOM was deferred.

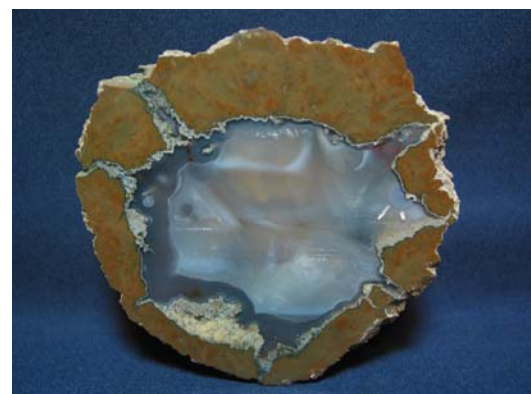
According to Cross & Zeitner’s “Geodes – Nature’s Treasures”, “Geodes are natural inorganic objects, most often chalcedony (pronounced kal-sid-knee) which are or have been hollow. Geodes are usually roughly spherical in shape and can occur in igneous or sedimentary rock. The interior may be lined with crystals, usually quartz, pointing towards the center”. I mention the Cross and Zeitner book as our own Donnette Wagner did a fair amount of the photograph in the book.

In igneous rocks, it is believed that the geodes formed in gas pockets. Mexican geodes are good examples of geodes formed in igneous rocks. In sedimentary rocks, some of the geodes have formed in the casts of buried organic materials. The origin of the Keokuk geodes is less clear with theories abounding. The most accepted theory is that the geodes formed in cavities that were originally anhydrite concretions on the sea floor. Another theory is that the geodes formed in cavities left by marine life such as sponges, horn corals, etc. This theory is supported by geodized fossils of sea life (brachiopods, crinoids, and gastropods amongst others) found in Indiana and geodized coral fossils found in Florida.



Keokuk geodes are the best known of the geodes formed in sedimentary rocks. They are found in the Warsaw formation where Missouri, Illinois, and Iowa share a common border point along the Mississippi River. Keokuk is actually a small town in Iowa. The state rock of Iowa is the Keokuk geode.

As mentioned in the definition, geodes are not necessarily hollow, although they were at one time in their formation. When a geode is filled completely, it is referred to as a nodule. A classic example of solid geode is the Thunder Eggs which are found in Oregon



and in Australia. Thunder Eggs are the state rock of Oregon.

If geodes can be found in sedimentary and igneous rock formations, are they found in Texas? We have lots of both types of rock formations. And the answer is: YES. The Texas Rock and Fossil poster published by the Texas Department of Transportation shows several pictures of geodes and even a thunder egg. It specifically lists Jeff Davis and Presidio counties as locations for geodes.

Ref:

Cross, Brad L and Zeitner, June Culp, Geodes – Nature’s Treasure, Gem Guides Book Co, Baldwin Park, CA, copyright 2006

State Rocks, <http://www.answers.com/topic/list-of-u-s-state-minerals-rocks-stones-and-gemstones>

Geodes, <http://en.wikipedia.org/wiki/Geode>

Thunder Eggs, <http://geology.about.com/library/bl/images/blthunderegg.htm>

Texas Rocks and Fossils, Texas Department of Transportation

Question of the Month for November: What is Llanite

### Metroplex Gem and Mineral and Related Clubs

Texas School of Earth Science (Arlington G&M Club) meets the 1st Tuesday of each month at 7:30 PM at 1408 Gibbins, Arlington

Pleasant Oaks G&M Club meets the 1st Thursday of each month at 7:30 PM at Garland Women's Bldg., 713 Austin, Garland.

Lockheed-Martin Stone Steppers , 2nd Tuesday at 7:30 PM, 3400 Bryant-Irving Road, Fort Worth, TX

Dallas Paleontological Society meets the 2nd Wednesday of each month at 7:30 at Dallas Museum of Natural History, Fair Park.

Dallas G&M Society meets the 3rd Tuesday of each month at 7:00 PM at Ridgewood Rec. Cntr, 6818 Fisher Rd, Dallas.

Dallas Bead Society meets the 3rd Thur. of each month at 7:30 at Walnut Hill Rec. Center, NW corner Walnut Hill & Midway, Dallas

Oak Cliff G&MS meets the 4th Tuesday of each month at 7:30 PM, Ice House Arts Plaza, 1011 Brooklyn, Dallas

Fort Worth G&M Club meets the 4th Tuesday of each month at 7:30 PM at 3545 Bryan Avenue, Fort Worth, TX.



## The Federation Page – News from the AFMS and SCFMS

### Truth & Some Consequences .

By Jon Spunaugle, AFMS Conservation/Legislation Chair  
Received via email

#### **America the Beautiful Pass Update.**

On September 22, 2006, the U.S. Forest Service published a notice that it was going to use Recreational Resource Advisory Committee's (RACs) for advising the Forest Service on fees required by The Federal Lands Recreation Enhancement Act for accessing certain lands managed by the Forest Service. Where possible, through a new interagency agreement, the Forest Service will utilize existing BLM Resource Advisory Councils (RACs), where appropriate, or new Recreation RACs will be chartered by the Forest Service. (see the Internet @ <http://www.fs.fed.us/>)

This presents us with great opportunity to have a significant say in the use and cost of fees for access to public lands. I strongly urge "rockhounds" every where to apply for membership on these advisory committees. Vacancies for these Advisory Committees are announced in the Federal Register. If someone wishes to do so and needs a letter of recommendation, they need only to contact me. I was honored to write such a letter for Issabella Burns as well as others, and would do the same for any AFMS Society Member.

Our AFMS Past President Isabella Burns has served on such an advisory committee in the past and through this activity brought the amateur hobby concerns and hopes to the attention of people who can make a difference. I know from conversations with Isabella how much she enjoyed the activity and how much she learned and how much she accomplished. She did make a difference. You can too.

#### **Secure Rural Schools Land Initiative follow-up**

As promised in the April 2006 AFMS Newsletter, I am bringing to your attention an update on the Federal Land Acquisition program. As you may recall the Administration is proposing land sales to assist the Secure Rural Schools and Community Act of 2000. Most of the land sales would be small parcels not connected to larger parcels of public land. For more information on the lands that might be sold see the USDA Forest Service Internet site at [www.fs.fed.us](http://www.fs.fed.us)

The President's FY 2007 Budget for the Forest Service included a legislative proposal that would reauthorize the Secure Rural Schools and Community Self-Determination Act of 2000 to allow payments under the Act to continue for an additional five years. This proposal underscores the President's commitment to states and counties which have been impacted by the ongoing reduction in receipts primarily due to lower timber harvest levels on Federal lands. To provide a funding basis for an extension of the Secure Rural Schools Act, the President's proposal would authorize the sale of certain parcels of National Forest System Lands. Lands that are potentially eligible for this proposal have been identified at the Forest Service Internet site..





In my research, I find most of the parcels that could be sold are isolated small land areas of 60 acres or less and separated from larger Forest Service managed lands, but not all. To be certain of any impact on collecting activities and opportunities, local rockhounds need to review the maps available on the Forest Service Internet site.

I reviewed the National Forests maps in the states of Washington and Oregon, my home territory, and could not identify any impacted collecting sites. However Montana and especially Idaho potential sale locations seemed more likely to have collecting potential.


The Secure Rural Schools and Community Act of 2000 is up for renewal in Congress with the following Bills HR 515 and S- 267 being considered.

# Joint Workshop Calendar

## October 2006

SUNDAY	MONDAY	TUESDAY	WEDNESDAY	THURSDAY	FRIDAY	SATURDAY
1 Pleasant Oaks G&MC Show EMGI Bldg, Brookhaven	2 	3 Silver Smithing Class	4 Wire Wrap Class	5 PLEASANT OAKS Gem & Mineral Club Meeting 7:30 PM	6	7 Open Shop 9AM - 12PM  1st Sat. Trading Day
8	9 Open Shop 6-9 PM  Columbus Day	10	11 Photo Class	12 Women's night-out at the shop	13	14 Open Shop 9AM - 12PM ROCK SWAP at the SHOP
15	16 Open Shop 6-9 PM	17 Dallas Gem & Mineral Club Meeting 7:00 PM SHOP CLOSED	18 Photo Class	19	20 IGEM	21 Open Shop 9AM - 12PM IGEM
22 IGEM	23 Open Shop 6-9 PM	24	25	26 Women's night-out at the shop	27	28 Open Shop 9AM - 12PM
29  Daylight Saving's Time Ends	30 Open Shop 6-9 PM	31  Halloween				
Shop Phone Number: 214-349-2022. For Confirmation of Dates & Times contact Brenda Dowell at 972-771-9502						

## November 2006

SUNDAY	MONDAY	TUESDAY	WEDNESDAY	THURSDAY	FRIDAY	SATURDAY
				1 PLEASANT OAKS Gem & Mineral Club Meeting 7:30 PM	2	3 Open Shop 9AM - 12PM  1st Sat. Trading Day
5	6 Open Shop 6-9 PM	7 Metal Etching Class	8	9	10	11 Open Shop 9AM - 12PM
12	13 Open Shop 6-9 PM	14 Metal Etching Class	15	16	17	18 Open Shop 9AM - 12PM
19	20 Open Shop 6-9 PM	21 Dallas Gem & Mineral Society Meeting 7:00 PM	22	23  Thanksgiving	24	25 Open Shop 9AM - 12PM
26	27 Open Shop 6-9 PM	28 Meal Etching Class	29	30		
Shop Phone Number: 214-349-2022. For Confirmation of Dates & Times contact Brenda Dowell at 972-771-9502						

**CHIPS AND CHATTER**  
**Pleasant Oaks Gem & Mineral Club**  
 P.O. Box 831934  
 Richardson, TX 75083-1934



FIRST CLASS MAIL

To:

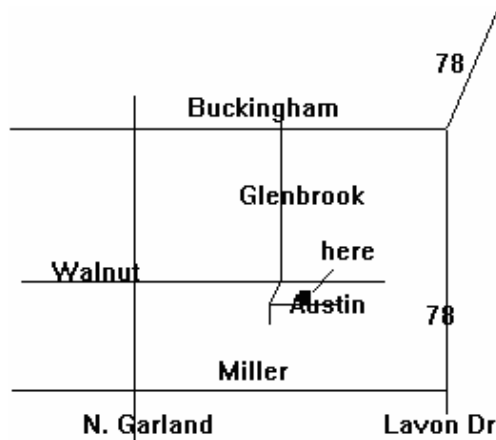
1<sup>st</sup> place SCFMS 2006 small bulletins  
 9<sup>th</sup> place AFMS 2006 small bulletins  
 3<sup>rd</sup> place SCMS 2005 small bulletins  
 3<sup>rd</sup> place, AFMS 2005 small bulletins  
 1<sup>st</sup> place SCFMS 2004 small bulletins  
 HM AFMS 2004 small bulletins  
 2<sup>nd</sup> place SCFMS 2003 small bulletins

**Next Meeting: October 5<sup>th</sup> 2006 at Garland Women's Activity Building, 7:30 PM**

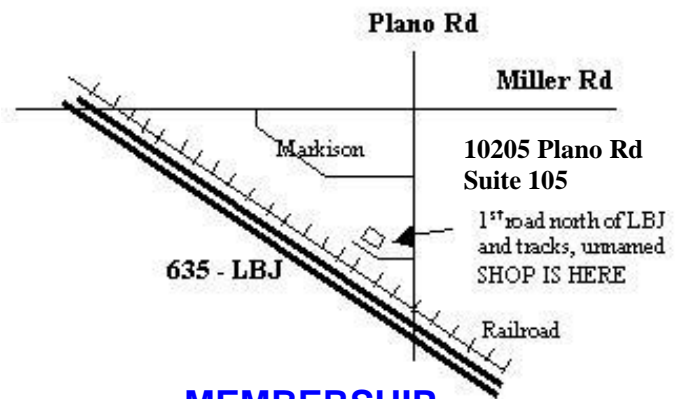
**Have You Been To The Shop Lately?**

**PLEASANT OAKS GEM and MINERAL CLUB OF DALLAS**

**Meeting Map**



**Joint Club Shop Map**



**MEMBERSHIP**

Single Adult: \$16.50, Junior: \$5.00  
 Family: \$27.50  
 (plus badge fee for new members)

**Member of**

South Central Federation of Mineral Societies

**Affiliated with**

American Federation of Mineral Societies

**MEETINGS**

First Thursday of each month, 7:30 PM  
 Garland Women's Activities Build  
 713 Austin, Garland, TX  
 (Northeast corner of Austin & Glenbrook)